



FUTURE ORIENTED AND SUSTAINABLE
DISPOSAL TECHNOLOGY

UNDERGROUND CONTAINER COLLECTION SYSTEMS



Modern and Up-To-Date

The H&G underground container collection system EUROPA shows what a modern waste disposal in urban and residential areas can look like.

The collection container is embedded entirely in the ground – the only visible things are the depositing columns in a timeless design. This way, H&G is not only solving the typical problems of above-ground collection areas for the waste and recyclable disposal, but also facilitates the design of a tidy and attractive living environment in public spaces.

Therefore, the system indirectly improves the quality of homes and lives. Due to the ground-level installation and low depositing height, the underground collection container system EUROPA provides easy and barrier-free access, especially for children and seniors.



→ YOUR BENEFITS

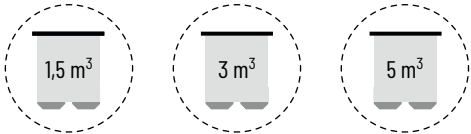
- *Barrier-free access*
- *Easy to use*
- *Low access height*
- *Clean waste collection points*
- *No obstruction of view*
- *Less space required*
- *Reduced noise emission*
- *Long life*
- *Trend-setting disposal*
- *Efficient and sustainable*

- 01. Infeed column
- 02. Collection container
- 03. Safety platform
- 04. Foundation container
- 05. Soil

COLLECTION CONTAINER 100% LIQUID-TIGHT

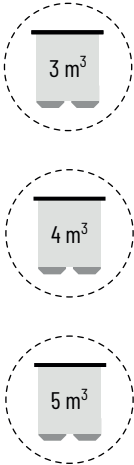
- The liquid-tight collection container prevents the leakage of remaining liquids and solids
- No contamination of foundations and sidewalks
- Odorless
- Reduction of follow-up costs
- Suitable for all lifting systems: Kinshofer mushroom system, 2-hook or 3-hook system
- Usable of all types of waste and recyclables

VOLUME



COLLECTION CONTAINERS WITH BOTTOM FLAPS

VOLUME



COLLECTION CONTAINER GRUMBACH

VOLUME



DEPOSIT COLUMNS HOUSING INDUSTRY

Deposit column EUROPAplus with filling chute

Capacity: up to 80 l

Material: mixed waste, organic waste, light packaging



Deposit column EUROPAplus with drum

Capacity: up to 120 l

Material: mixed waste, organic waste, light packaging



Deposit column EUROPAplus with flap

Material: paper and cardboard



Deposit column EUROPAplus with rosette

Material: glass & cans



Deposit column EUROPA round column with lid

Material: mixed waste, organic waste



PUBLIC SPACES

Deposit column EUROPA 13 - EUROPAgrumbach with rosette

Material: glass & cans



Deposit column EUROPA13 - EUROPAgrumbach with flap

Material: paper and light packaging



Deposit column EUROPA round column with rosette

Material: glass & cans



EASY DISPOSAL LOGISTICS

The disposal of all EUROPA models can be realized optionally with any common lifting systems and done practically by one-hand operation.

Kinshofer-Pilz



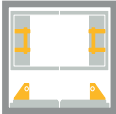
2-hook



3-hook



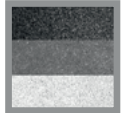
Grumbach



WALKING PLATFORM FOR COLLECTION CONTAINER

The surface of the collection container also is the walking surface and can be perfectly attuned to the surrounding environment by means of

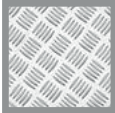
EPDM



Paving



Bulb plate



ACCESS CONTROL

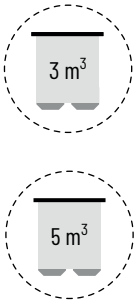
The access to the infeed column can be limited only to authorized users - optionally by means of a conventional profile cylinder or an up-to-date electronic ID system controlling the access via a chip card (transponder) or a smart phone.



CONCRETE FOUNDATION CONTAINER

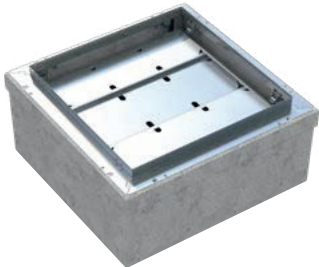
The concrete foundation casings are manufactured using monolithic casting in accordance with DIN 1045; C35/45 and are designed to comply with traffic load SLW 30 as standard. H&G supplies foundation casings in different capacities and dimensions and has the common size on stock. Installation height depends on the capacity.

VOLUME



SAFETY PLATFORM

During the disposal process, the foundation casing must remain securely closed. The counter weights raise the safety platform automatically which then closes the surface securely. The load capacity of the safety platform is up to 150 kg in acc. with DIN EN 13071.



UNDERGROUND CONTAINER COLLECTION SYSTEM - CITY

The H&G underground container collection system CITY is a clean, efficient and aesthetically pleasing solution for the waste disposal in public spaces. The greater part of the system disappears below ground. Emptying the container is a quick and easy process via a separate shaft.



UNDERGROUND CONTAINER LIFT - UFA

UFA, the underground container lift, is the variable waste disposal system that is guaranteed to keep your environment clean and tidy. With this system, the 240, 660 or 1,100 liter waste containers simply vanish under the ground – and with them, the unattractive waste container locations. An electro-hydraulic drive system ensures the waste containers are lifted quickly and reliably.











H&G Entsorgungssysteme GmbH
Lützelner Straße 46 • D-57299 Burbach (Germany)
Phone: +49(0)2736/5096-0
info@hg-systems.com
hg-systems.com
